

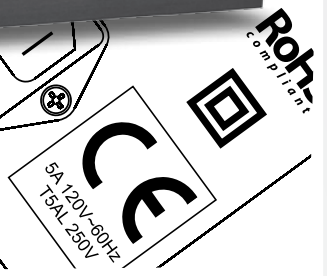
# MODEL 500

## OWNERS MANUAL

500W class A/B amplifier

Subsonic Filter Adjustment  
 20Hz 35Hz  
**CAUTION!**  
 Refer to Owner's Manual for  
 Adjustment Information  
 Factory Preset: 35Hz

**ATTENTION**  
 RISK OF ELECTRIC SHOCK  
 DO NOT OPEN  
**CAUTION**  
 RISK OF ELECTRIC SHOCK  
 DO NOT OPEN



RoHS  
 compliant

SUBWOOFER  
 AMPLIFIER

## IMPORTANT SAFETY INSTRUCTIONS

- Read these instructions.
- Keep these instructions.
- Heed all warnings.
- Follow all instructions.
- Do not use this apparatus near water.
- Clean only with dry cloth.
- Do not block any ventilation openings. Install in accordance with the manufacturer's instructions.
- Do not install near any heat sources such as radiators, heat registers, stoves, or other apparatus (including amplifiers) that produce heat.
- Do not defeat the safety purpose of the polarized or grounding-type plug. A polarized plug has two blades with one wider than the other. A grounding type plug has two blades and a third grounding prong. The wide blade or the third prong are provided for your safety. If the provided plug does not fit into your outlet, consult an electrician for replacement of the obsolete outlet.
- Protect the power cord from being walked on or pinched particularly at plugs, convenience receptacles, and the point where they exit from the apparatus.
- Only use attachments/accessories specified by the manufacturer.
- Unplug this apparatus during lightning storms or when unused for long periods of time.
- Refer all servicing to qualified service personnel. Servicing is required when the apparatus has been damaged in any way, such as power-supply cord or plug is damaged, liquid has been spilled or objects have fallen into the apparatus, the apparatus has been exposed to rain or moisture, does not operate normally, or has been dropped.
- **WARNING:** To reduce the risk of fire or electric shock, this apparatus should not be exposed to rain or moisture and objects filled with liquids, such as vases, should not be placed on this apparatus.
- To completely disconnect this equipment from the mains, disconnect the power supply cord plug from the receptacle.
- The mains plug of the power supply cord shall remain readily operable.
- **WARNING:** Disconnect power before making any connection to the speaker terminals as they may present a risk of electrical shock.

### WARNING



The lightning flash with arrowhead symbol within an equilateral triangle, is intended to alert the user to the presence of uninsulated "dangerous voltage" within the product's enclosure that may be of sufficient magnitude to constitute a risk of electric shock to persons.

### CAUTION



The exclamation point within an equilateral triangle is intended to alert the user to the presence of important operating and maintenance (servicing) instructions in the literature accompanying the product.

# MODEL 500

## OWNERS MANUAL

### CONTENTS

IMPORTANT SAFETY INSTRUCTIONS.....	2
YOUR MODEL 500 SUBWOOFER AMPLIFIER .....	3
FEATURES .....	4-5
CONNECTION.....	6-7
SETUP	
Tips, Hints, & Suggestions.....	8-9
MODEL 500 Controls .....	9
Fine Tuning the Controls.....	9-10
Other Controls.....	10
SPECIFICATIONS.....	10

### YOUR MODEL 500 SUBWOOFER AMPLIFIER

Thank you for purchasing the Model 500 subwoofer amplifier. The Model 500 has been developed to provide extraordinary power and clarity while also providing a broad range of woofer compatibility.

This manual covers operating procedures, general setup, and technical specifications for your Model 500. We recommend that you thoroughly read through the material contained in this manual before connecting your amplifier. This will ensure that you have a complete understanding of how to properly setup and operate your subwoofer amplifier for optimum performance. Thank you again for choosing the Model 500—we are confident that it will provide you with the extraordinary power and performance necessary to bring your subwoofer to life.

#### Box Contents:



Amplifier



Rack Ears with Screws



Power Cord



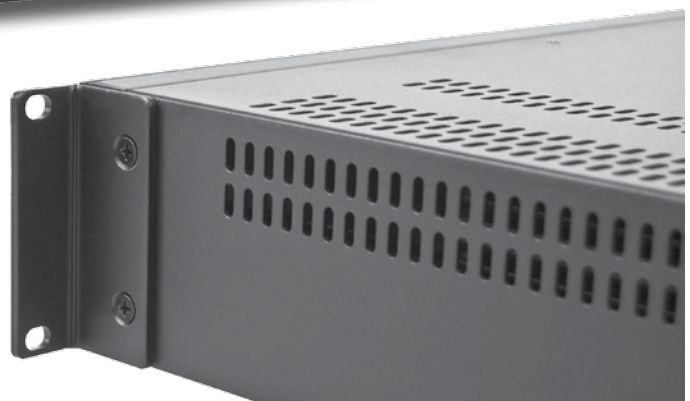
Owners Manual

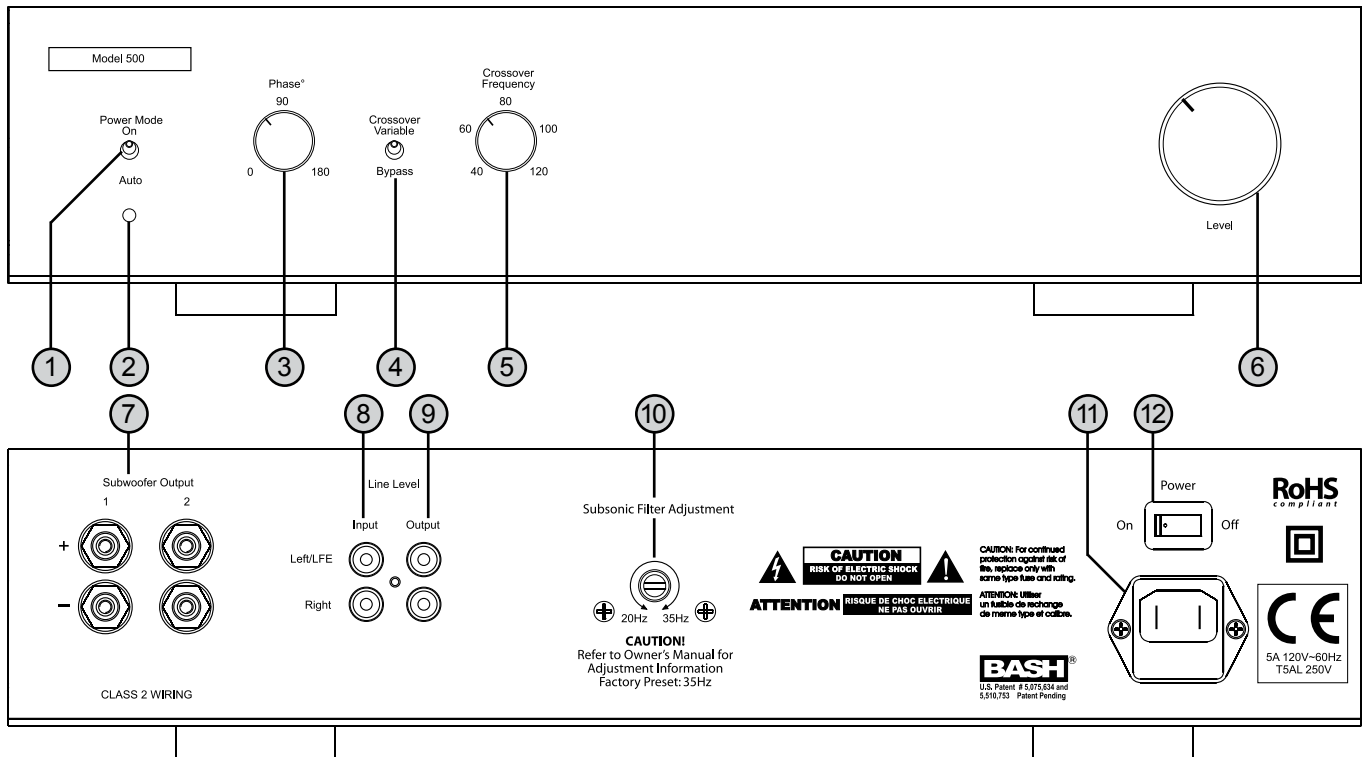
## FEATURES

- The MODEL 500 subwoofer amplifier was designed to offer performance, value, and flexibility. It incorporates a 500W class A/B amplifier utilizing the patented BASH technology for high electrical efficiency.
- 4 independent controls offer flexibility to integrate nearly all subwoofers with the main speakers and the listening environment. (Instructions for fine tuning these controls are described in a later section of this manual.)
- The continuously-variable low pass filter network is adjustable from 40Hz to 120Hz and can be bypassed if it is preferable to use an external filter or one located in an outboard receiver or processor.
- The continuously-variable phase circuit is adjustable from 0 to 180 degrees to finely integrate the subwoofer with the main listening speakers.
- The MODEL 500 incorporates a unique continuously-variable subsonic filter that is adjustable from 20Hz to 35Hz that preserves the amplifiers power for only bass frequencies that are reproducible by the subwoofer. It also helps to protect the subwoofer from being overdriven and can help to reduce distortion by reducing extreme woofer excursion.
- A defeatable Auto-power mode turns the amplifier on automatically when a signal is detected. The Auto-power mode can be defeated if it is desirable to use a remote AC circuit to control the amplifier power.
- Dual subwoofer outputs allow multiple woofers to be connected to the same amplifier without having to resort to pigtailed, wire nuts, or specialized connectors.
- The Model 500 incorporates stereo Line Level inputs and outputs that permit the amplifier to be connected between a preamplifier and amplifier without the need for Y-connectors. The Line-Level inputs also incorporate a buffered internal summing network so that a mono signal is derived from the left and right channels while maintaining the stereo signal integrity for the main stereo speakers.
- A double-insulated isolated-ground electrical supply prevents electrical ground loops and reduces the noise floor of the entire audio system.



Model 500 amplifier shown with rack ears attached.





- ① **Power Mode Switch** – Selects if amplifier power is signal activated; Auto=Signal Sensing, On=Bypassed (Amp ON)
- ② **Power and Standby Mode Indicator** – Off=No Power; Blue=On; Red=Standby
- ③ **Phase Control** – Adjusts relative alignment of output signal with respect to the input; 0°=In Phase, 180°=Out of Phase
- ④ **Crossover Bypass Switch** – Selects if internal crossover (low pass filter) is active, Variable=Active; Bypass=Inactive
- ⑤ **Crossover Frequency Control** – Adjusts low pass filter cutoff frequency
- ⑥ **Level Control** – Adjusts output level to subwoofer
- ⑦ **Subwoofer Output** – Dual sets of 5-way binding posts provide connection for subwoofer(s); Outputs 1 & 2 are parallel
- ⑧ **Line Level Input** – Input connection for RCA Line Level signals from processor or preamp; Includes LFE & Sub signals
- ⑨ **Line Level Output** – Input signal is passed to these jacks to allow multiple connections without the use of Y-cables
- ⑩ **Subsonic Filter Adjustment** – Adjustment to determine lower frequency limit of amplification
- ⑪ **Power Input Receptacle and Fuse Holder** – IEC 2-conductor 120V receptacle accepts supplied IEC power cord
- ⑫ **Master (Main) Power Switch** – Primary power; On=Power Enabled; OFF=Power disconnected from amplifier circuit

## CONNECTION

Before making any connections, ensure that power cord is disconnected or that the main power switch is switched to the off position.

### Output Connections:

There are two sets of outputs on the back of the amplifier. Since this is a mono amplifier the exact same signal is present at both sets of outputs. Outputs 1 and 2 are internally connected in parallel. Therefore, calculating the load impedance for the two connections should be done as it would for any parallel connection. For example, connecting an 8-ohm load to Output 1 and a second 8-ohm load to Output 2 would produce a 4-ohm load for the amplifier. Note: The Model 500 is optimized for a 4-ohm load.

The Speaker output connectors are 5-way binding posts. They will accept banana style plugs. To access the banana connections, remove the black and red button-plugs from the back of the connectors by pulling rearward on the plugs.

No signal connection cable is provided with the MODEL 500 amplifier since the length of cable is installation specific. A shielded RCA type coaxial cable or a shielded two-conductor wire with RCA type connectors is required for connection of the MODEL 500 to the audio system.

---

### Input Connections:

Follow the diagram on page 7 for connecting the subwoofer to your audio system. Use the option that best suits your installation. The information below will aid in determining which option to use.

#### **OPTION 1** (Left - Right Stereo)

If an LFE (Low Frequency Effect) or Subwoofer output is available then skip to Option 2 since it will likely produce the best results. If no LFE output is available and a line level Front Channel Output or Preamplifier Output is available, then this (Option 1) is the preferred method of connection.

Per the Option 1 drawing on the adjacent page, use a stereo RCA style (patch) cable and connect the left and right line level (RCA style) front channel outputs of your receiver or preamplifier/processor to the Left/Right Line Level inputs of the MODEL 500.

#### **OPTION 2** (LFE)

If the amplifier is to be connected to a modern home theater receiver or processor with an available LFE or Subwoofer output then this option will likely produce the best results. If no LFE or Subwoofer output is available but a line level Front Channel Output or Preamplifier Output is available, then use Option 1.

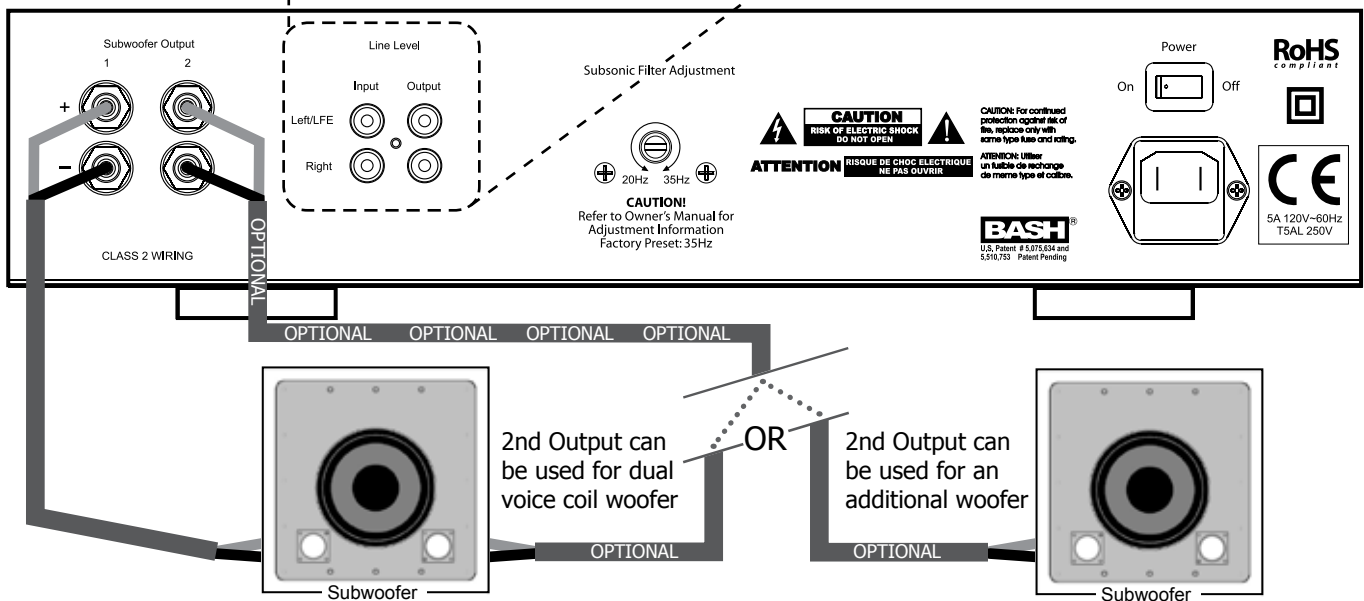
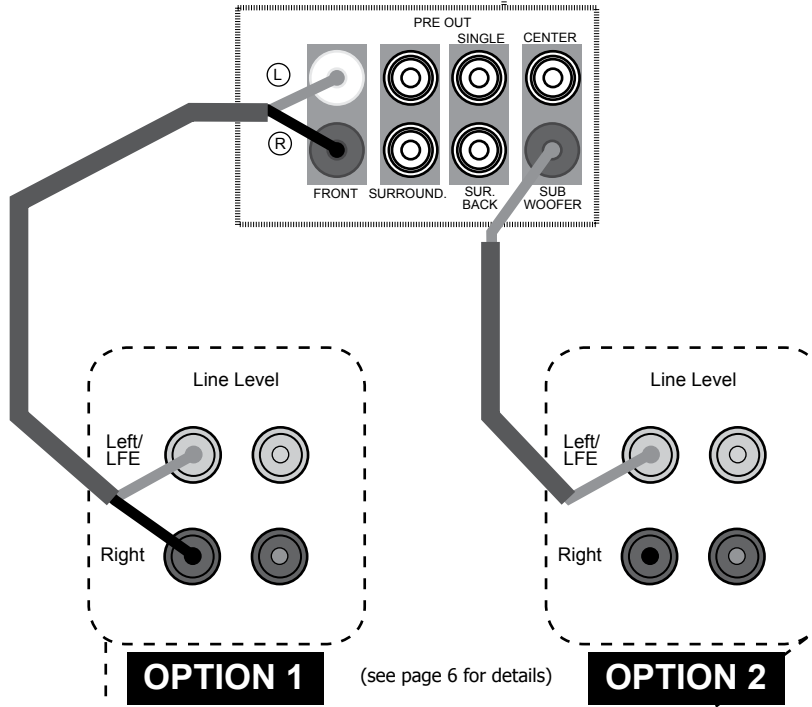
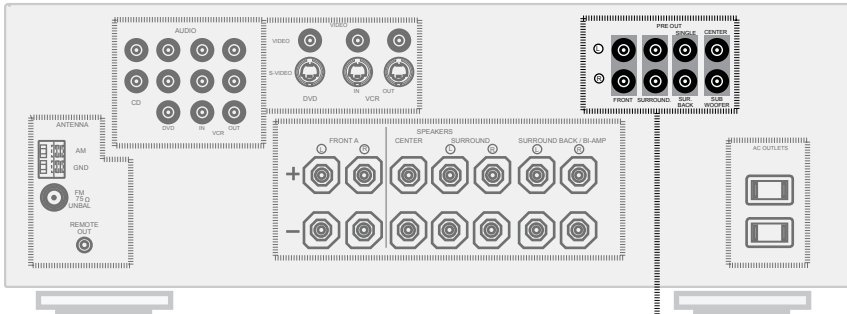
Per the Option 2 drawing on the adjacent page, use a single RCA style (patch) cable and connect the line level (RCA style) LFE or Subwoofer output of your receiver or preamplifier/processor to the Left/LFE Line Level input of the MODEL 500.

---

### AC Power Connection:

The unit is shipped with a standard IEC AC cable. Remove this cable from its packaging and insert the cord into the IEC receptacle (11) on the back of the amplifier. It is best to connect power only after all other connections are made. Connect the power cord to an AC wall receptacle or similar source.

# CONNECTION (continued)



### Tips, Hints, & Suggestions

The MODEL 500 controls will allow you to make the best of virtually any installation. If you feel uncomfortable with setting up your MODEL 500 after reading through this manual then you should consider enlisting the help of an experienced person or contacting your dealer.

Below are some generalized rules for understanding the acoustic nature of low frequency sound reproduction in an average residential listening room. These rules will aid in establishing the best placement of your subwoofer and the tuning of your MODEL 500 amplifier. Experiment with the adjustments of your MODEL 500 to determine what works best in your listening room.

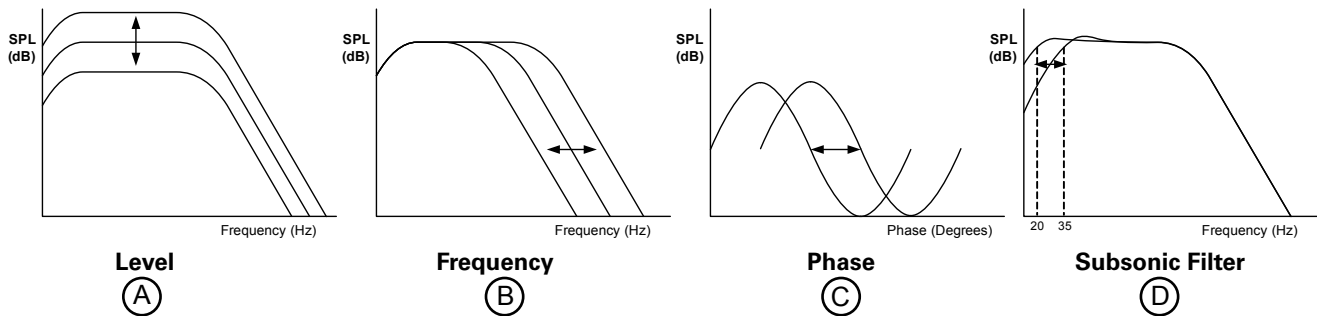
- Most rooms have significant resonant modes at low frequencies. The listener will experience these resonant modes as a variation in the intensity of certain frequencies at different locations within the room. Resonant modes are the result of reflected acoustic energy interacting within a room's boundaries. The resonant modes can produce large errors in the frequency response and reduce the overall enjoyment of the audio reproduction. Equalization cannot simultaneously compensate for all locations within a room. However, physical elements within or at the room's boundaries can effectively improve the room's behavior. Subwoofer placement also has an effect on the excitation of the resonant modes and the way they are experienced. Contacting an expert in the field of acoustics can be worthwhile if one finds that the low frequency reproduction in their room is unsatisfactory or if one wants assistance in optimizing their installation.
- Placing a subwoofer on the floor near a wall will increase its radiating power by as much as 2X. Placing a subwoofer on the floor near the intersection of two walls (a corner) will increase its radiating power by as much as 4X. Corner loading, as it is sometimes called, is an excellent way to get bass extension and greater acoustic output from a subwoofer especially at very low frequencies.
- In the same way that the subwoofer's output is augmented by a corner, the listening position can also have a significant effect on how the bass is experienced. Sitting at a room's boundary, such as near the back wall of a room, will significantly increase the bass level across much of the low frequency spectrum.
- Placing a subwoofer close to the listening position (less than 5ft (1.5m)) can increase the intensity of the transients and reduce the acoustic power demands from the subwoofer in some installations. In others, it can increase the power demands if the woofer is placed at a primary node. Placing a subwoofer(s) close to the listening position can also create more tactile sensation.
- Bass frequencies below about 80Hz are considered to be omnidirectional and tend to have no localization. That is to say that it is difficult to determine their place of origin. For this reason, placement of most subwoofers is not limited to the front of the room. However, in practice this is not always the case. There are cues such as tactile and audible vibration and higher frequency signal content that can suggest the direction of the source. For this reason it may be desirable to locate the subwoofer(s) at the front of the room. It may also be necessary to reduce the crossover frequency below 80Hz if one finds that the bass sounds too detached from the other sound sources.
- Placing a subwoofer(s) at the back of the room is also a consideration especially if placement of a subwoofer at the front of the room is not suitable or produces poor results. Placement directly behind or beside the listening position can produce very good results as well as corner loading in the back of the room. Other options include placing the subwoofer(s) on the side(s) of the room especially when multiple woofers are used. If possible experiment with different positions. Don't exclude the possibilities of locating your subwoofer in walls, ceilings, floors, or underneath, beside, and behind furniture.
- Symmetrically or asymmetrically locating two or more woofers in the room can be done to reduce room mode effects and to balance the localization of the sound.
- It is not necessary to direct the front of a subwoofer at the listening position.



## MODEL 500 Controls

The MODEL 500 subwoofer amplifier has four variable controls to integrate its output to the subwoofer and for tailoring the subwoofer's output to the room and to the primary speakers (also known as satellites). These controls are Level, Crossover Frequency, Phase, and Subsonic Filter. The control with the most audible effect is the Level control, followed by the Crossover Frequency, Phase, and then Subsonic Filter, which has the least audible effect.

The following legend shows graphically how each control affects the audio signal.



Note: **SPL** is "Sound Pressure Level" (Volume)

## Fine Tuning the Controls

We recommend the following method as a starting point for fine tuning the MODEL 500 subwoofer amplifier.

### (A)(B) Level and Frequency

Begin with the amplifier's Level control all the way down and the Frequency adjustment set to 120Hz. With the Frequency control in this position the woofer will output higher frequencies that will likely be duplicated by the satellite speakers. "Satellite speakers" is a term used to describe the primary listening speakers that cover the frequency range above the subwoofer's.

Play some familiar music through the system (music with robust bass content) and increase the Level control until the bass passages sound robust or exaggerated. Then reduce the Frequency control to blend the subwoofer with your main system speakers. We have found that most speakers with 6" to 8" woofers blend well with the crossover set somewhere between 50Hz and 80Hz.

Readjust the Level and the Frequency controls (up or down) as necessary until the bass sounds full, extended, and natural. Use multiple musical pieces to test the system while fine tuning the controls. If it sounds like your subwoofer is always producing the same bass note with different recordings it is possible that the bass level is adjusted too high.

### (C) Phase

The effect of the Phase control is less noticeable than the Level or Frequency controls. If you have difficulty hearing the changes while making this adjustment it can be helpful to temporarily adjust the Frequency control up to 120Hz. Return the Frequency control back to its desired position after you get a feel for its effect. Also, be patient and take time to get used to the way your system sounds. It will become easier to hear the effects of the Phase control as you become more familiar with the sound of your system through many hours of listening.

When adjusting the Phase use various pieces of music with significant bass content. Rotate the Phase control back and forth across its range and listen for the localization of the bass to change and for the bass level to increase and decrease slightly. Rotate the control to the position that gives you the best overall response. Ideally, this is the setting where the bass sounds the most defined and most coherent. It may be helpful to have someone else adjust the control while you are at the optimum listening position. If the effect is not immediately apparent have them make abrupt 90 or 180 degree changes.

**D Subsonic Filter**

This control is used to protect the subwoofer from damage due to excessive excursion, reduce distortion, and also to preserve the amplifiers power in installations where the subwoofer is incapable of reproducing extremely deep bass passages. Ideally, the control should be set at or just below the woofer’s low frequency limit. The factory default position is 35Hz. This will work well for most subwoofers 12” or less in diameter. For large subwoofers or where the woofer is capable the control should be lowered below the 35 Hz position.

Other Controls

**Crossover Switch**

If you choose to bypass the internal crossover and use an external crossover, such as those located in most modern receivers and processors, then you will need to fine tune the system based on the adjustments provided by the manufacturer of your electronics in conjunction with the Level and Phase controls on the MODEL 500. Note, the Level and Phase adjustments on the MODEL 500 are not bypassed and will still function as indicated above.

To bypass the internal crossover, move the Crossover switch ④ to the Bypass position. The subwoofer will now pass signals up to 300Hz.

**Auto Power Mode Switch**

The MODEL 500 contains a circuit that automatically powers up the amplifier when a signal is detected. The same circuit also places the MODEL 500 into standby mode when no signal has been detected for a period of approximately 10 minutes. This signal sensing circuit can be bypassed by switching the Auto switch ① to the ON position if it is preferable to control the MODEL 500’s power with a remotely operated power source.

SPECIFICATIONS

- Frequency Response:.....20Hz – 300Hz
- Crossover Frequency:.....40Hz – 120Hz (Low-pass filter with bypass switch)
- Phase Adjustment:.....0 – 180 degrees (Continuously variable)
- Amplifier Output Power:.....500 watts RMS into 4 ohms, with thermal and clipping limiters  
250 watts RMS into 8 ohms, with thermal and clipping limiters
- Distortion:.....Less than 0.2% at rated power
- Audio Inputs:.....Summing stereo line level (RCA x2)  
LFE (RCA shared with Left input connector)
- Input Impedance:.....Line Level – 20k ohms, Unbalanced
- Input Power:.....120V 60Hz AC
- Input Power Connection:.....IEC 2-wire receptacle with integral fuse holder
- Power (Mains) Fuse:.....5A 250V T5AL (5x20mm) style Slow Blow
- Power Modes:.....Auto signal sensing and always on
- Auto Off Delay:.....~10 minutes
- Dimensions:.....16-7/8"W x 3-7/8"H x 14.75"D, (429W x 98H x 375D)mm (with feet, without ears)
- Weight:.....15lbs (6.8kg)
- Shipping Dimensions:.....21.5"W x 8.5"H x 17.5"D, (550W x 220H x 450D)mm
- Shipping Weight:.....20lbs (9.1kg)







Rev. G  
Note: Specifications are subject to change without notice.  
For the most up to date manual information please check our website.

**OEM SYSTEMS COMPANY**  
(775) 355-0405 ♦ (800) 291-0561 FAX  
www.oemsystems.com ♦ info@oemsystems.com