

USER GUIDE

Bluetooth® Receiver with Apple® 30-pin Connector

MODEL: **MS-B1**

Description:

Converts most* iPod, iPhone, and iPad charging docks or Apple composite A/V charging cables**into a wireless Bluetooth terminal.

Allows wireless playback of music from your Bluetooth-capable device.

Supports Bluetooth 2.1+EDR and Bluetooth 2.0, 1.2, and 1.1 backward compatibility

Supports Bluetooth Advanced Audio Distribution Profile (A2DP), AVRCP

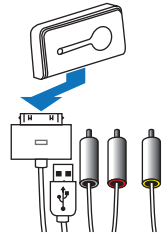
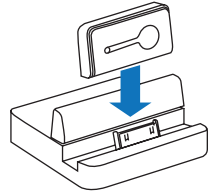
Operating Range: 10m-20m (33ft-66ft) depending on environment

BQB (Bluetooth Qualification Board) Qualified

The MS-B1 is compatible with most docking stations and speaker docks. (Docks must utilize the Apple analog audio stream.)

*Some iPod docks only function when they identify that an iPod, iPhone, or iPad is plugged in. The MS-B1 will not work with these docks. Also, the MS-B1 utilizes the analog signal path of the docking device, and though this path is commonly used by manufacturers, the MS-B1 will not output signal to docking devices that only use the digital signal.

** Note: If the MS-B1 is connected to an A/V cable, the cable must have an integral USB connector and the USB connector must be plugged into a power source that provides a standard 5 volts.



mainstation®

BLUETOOTH RECEIVER

Connection:**Connecting to (Pairing) the MS-B1 Bluetooth Receiver**

Plug the MS-B1 into a compatible dock, cable, or iPod player. If the power is not already on then activate it now. The LED of the MS-B1 will begin flashing rapidly when power is present and it is waiting to be paired.

Access the Bluetooth menu of your audio player and search for discoverable devices. Select the MS-B1. Note: You must be within range of the MS-B1 receiver

If a **PASSCODE** is requested, enter **6721 (M, S, B, 1)**.



When the connection is made, the light on the MS-B1 will glow steady.

Specifications:

Current Draw - 40mA

S/N Ratio - >90dB

Operating Range - 10m to 20m (33ft-66ft) depending on environment

Modulation - GFSK, 1Mbps, 0.5BT Gaussian

Frequency - 2402MHz to 2480MHz

Sample Rate - 48kHz

Supports A2DP (Advanced Audio Distribution Profile) and AVRCP (Audio/Video Remote Control Profile)

Dimensions (WxHxD) - 48 x 25 x 8mm (1-7/8" x 1" x 5/16")

**Warranty:**

1 Year Limited Warranty

*iPad, iPhone and iPod are trademarks of Apple Inc., registered in the U.S. and other countries
The Bluetooth® word mark and logos are registered trademarks of Bluetooth SIG, Inc.*

OEM SYSTEMS COMPANY
(775) 355-0405 • (800) 291-0561 FAX
www.oemsystems.com • info@oemsystems.com



CUSTOM
ELECTRONIC
DESIGN &
INSTALLATION
ASSOCIATION
®

