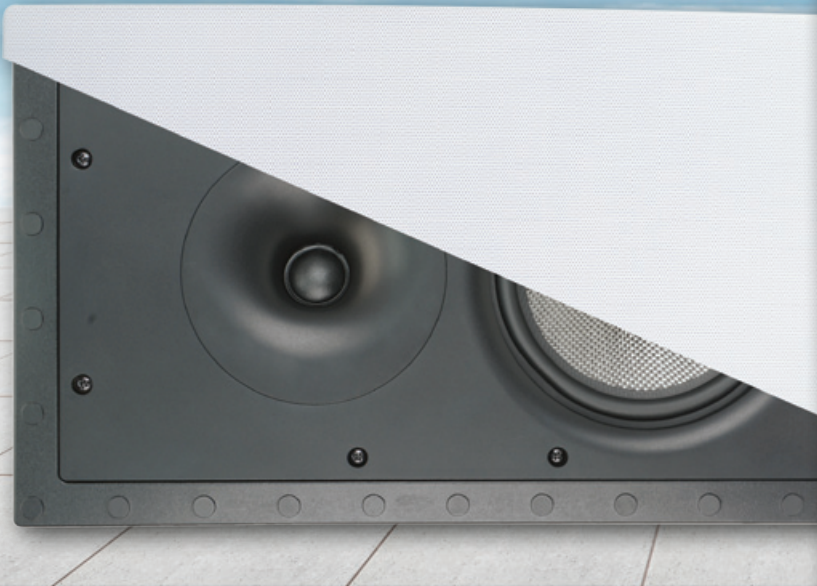


Presence[®] Elite



Frameless Loudspeakers

PE-W620LCRSf

Dual 6-1/2" 2-way In-Wall LCRS Loudspeaker

Specifications

Frequency Response: 50Hz - 21kHz \pm 3 dB

Power Handling: 50 watts nom. 100 max.

Sensitivity: 86dB 2.83 V / 1 meter

Impedance: 6 ohms nominal

Tweeter: 25mm Rotating silk dome tweeter

Cut-out dimensions: 7-15/16" W x 14-7/16" H x 3-1/8" Deep

Overall dimensions: 9" W x 15-3/4" H

Sold and Shipped Individually

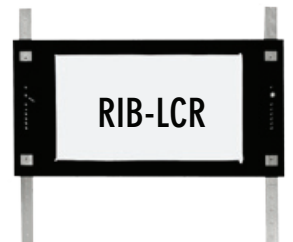
Features:

- Woven glass fiber woofer with butyl rubber surround
- Rotating Waveguide with high efficiency silk dome tweeter
- High temperature polyimide voice coils
- Industry leading superior clamp-ring mounting system
- Super slim 3mm all-weather frameless grille
- Orient Vertically or Horizontally
- High quality multi-order crossover
- Gold-plated high tension terminals fit up to 5-gauge wire



Side View

Optional Pre-Construction Bracket



Rev. C

OEM SYSTEMS COMPANY
(775) 355-0405 ♦ (800) 291-0561 FAX
www.oemsystems.com ♦ info@oemsystems.com